

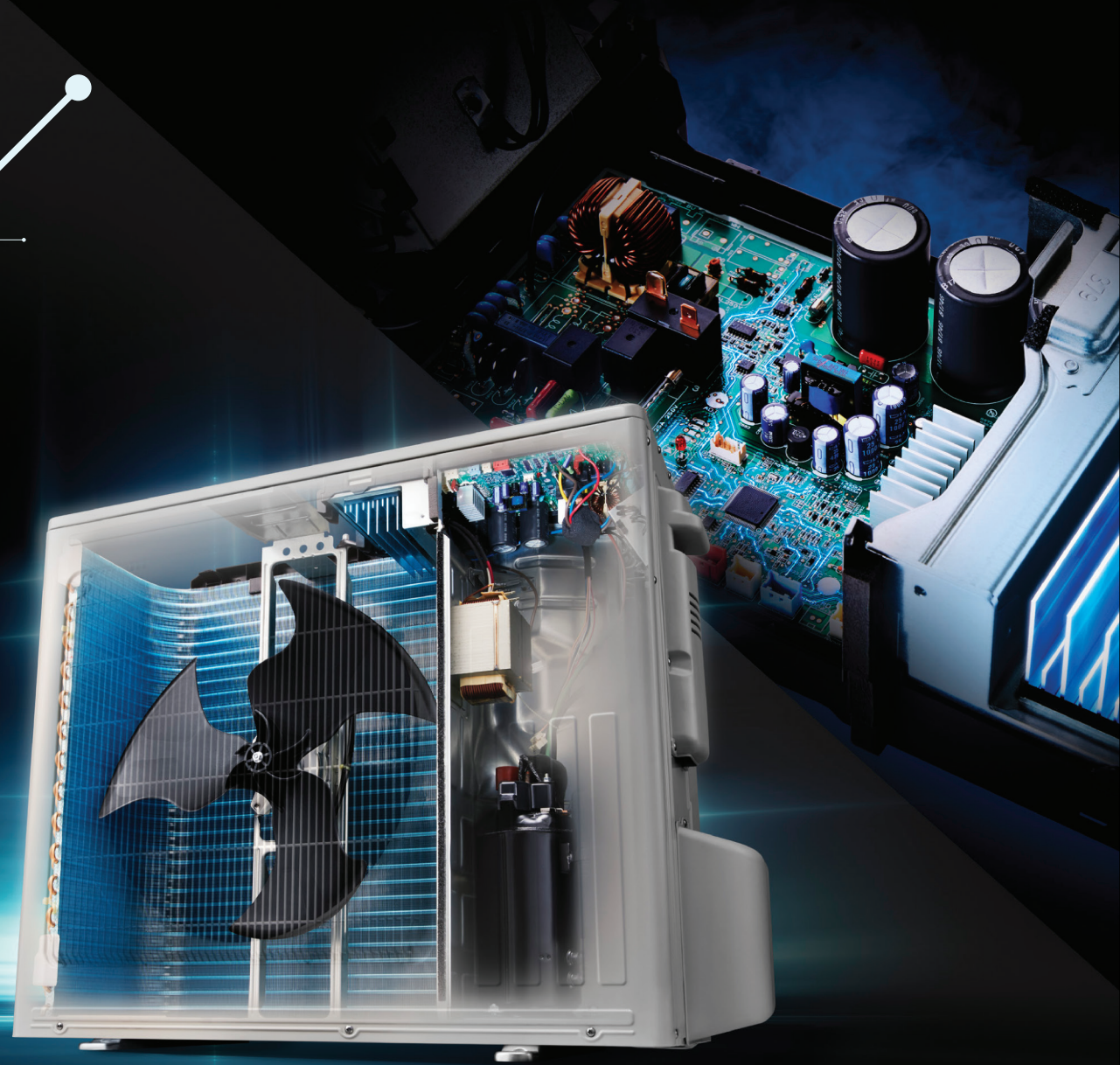
**SUPREMACY
POWERFUL ACs FOR
BIGGER ROOMS**

MSY-JR Series



Mitsubishi Electric Inverter Technology

The JR Series features advanced inverters that utilize Mitsubishi Electric's cutting edge technology, developed worldwide through many years of experience. We have achieved powerful cooling with high energy efficiency to bring you optimal comfort.



Inverter Power Module



Inverter Power Module

The Inverter Power Module is the brain of the air conditioner. It minimizes power consumption by adjusting the frequency. The IPM is developed by MELCO.

Mitsubishi Electric Propeller Fan And DC Fan Motor



Propeller Fan

Newly designed propeller fan maximizes airflow efficiency. It delivers the most air volume with the least noise.



DC Fan Motor

A highly efficient DC Fan motor drives the fan of the outdoor unit. Efficiency is much higher than an equivalent AC motor.

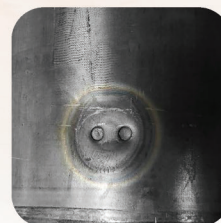
Mitsubishi Electric Compressor

The compressor is the heart of the air conditioner. Employing Mitsubishi Electric's proprietary technology, we are able to achieve both high efficiency and high power.



Poki-Poki Motor

Dramatically enhanced motor efficiency utilizing original dense winding technology. 28% more wire as compared to conventional motor.

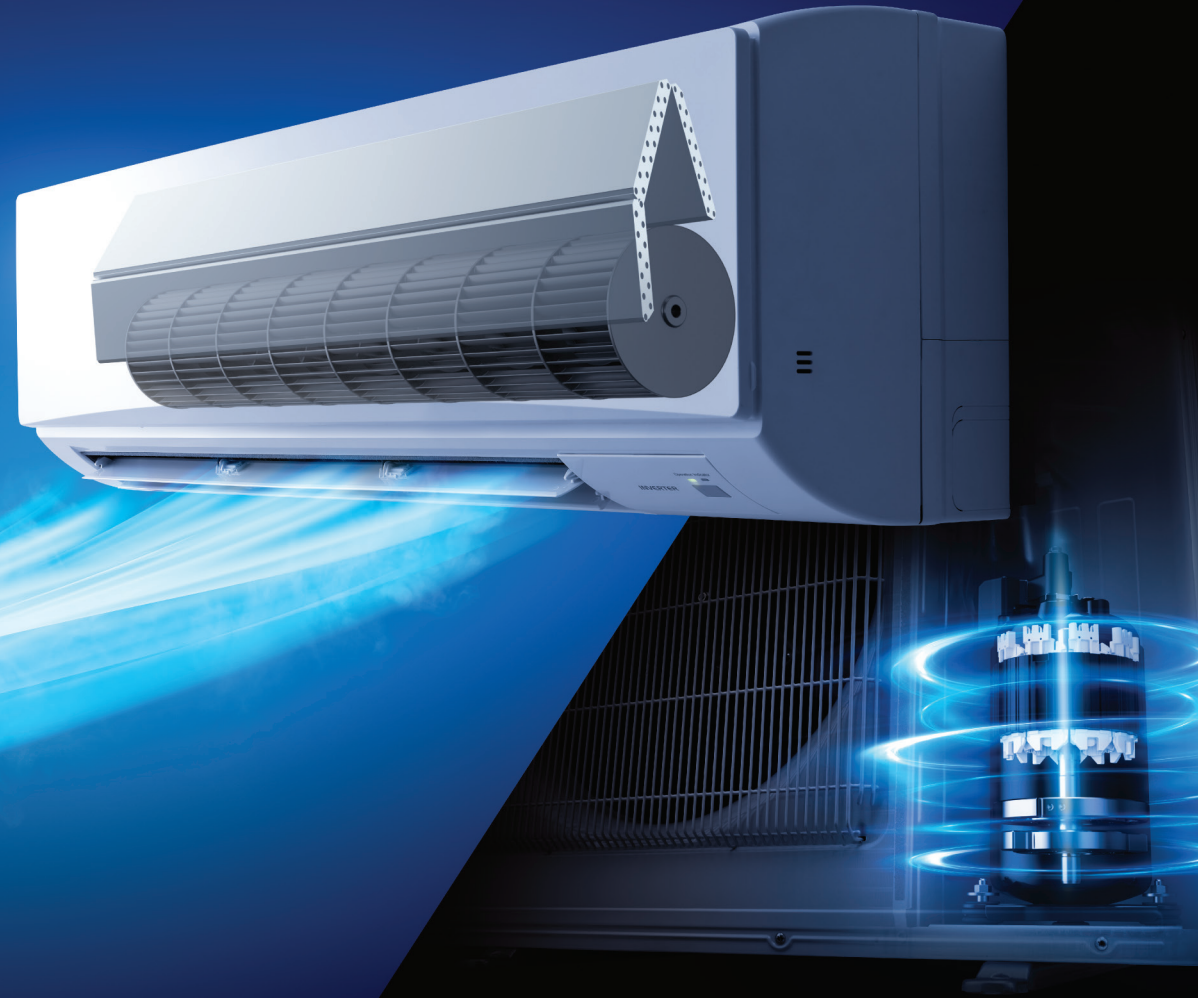


Heat Caulking

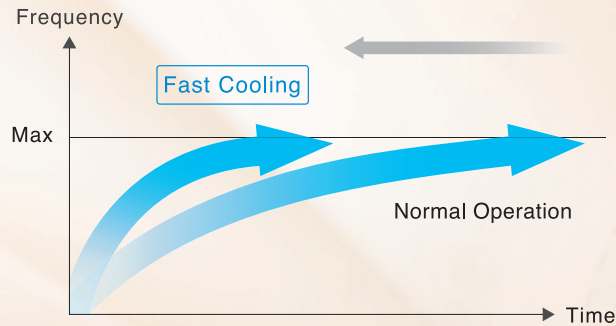
Original heat caulking method minimizes cylinder distortion for even greater efficiency.

Fast Cooling

Mitsubishi Electric's Fast Cooling brings instant refreshment & relief from the scorching heat and provides a comfortable environment.

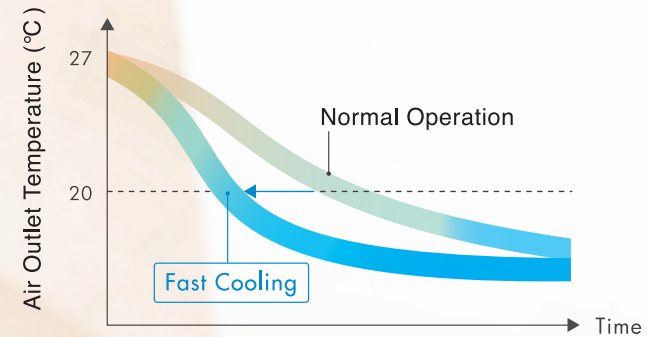


01 Compressor Frequency Image



Pressing the Fast Cooling button makes the compressor reach its maximum frequency remarkably faster than in normal operation.

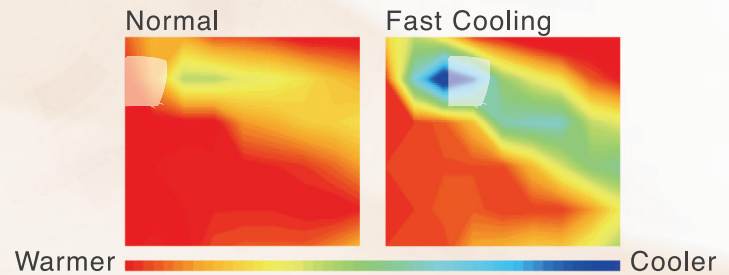
02 Air Outlet Temperature



Lowers the air outlet temperature faster than in normal operation.

03 Thermography

Quickly cools the room using the highest-volume and low-temperature airflow settings, within 2 minutes of operation.



04 Fast Cooling Button

Fast Cooling mode starts immediately with a push of the button. According to preference, air direction can be changed freely.

Fast Cooling Once Activated
Continues For 15 Minutes.

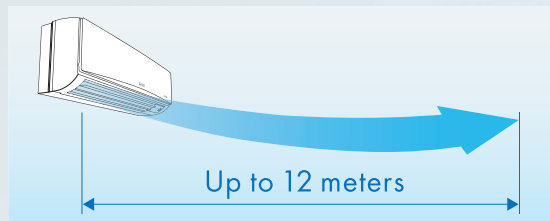




Long Airflow

Delivers substantial and comfortable airflow

Delivers comfortable airflow up to 12 meters.
Suitable for even large living rooms.



It's available when air direction is horizontal
and fan speed is S-Hi.

CROSS FLOW FAN TECHNOLOGY



Cross Flow Fan

Our unique Cross Flow Fan construction guides air smoothly along each rotating wing as it simultaneously intakes and expels air. This allows for highly efficient delivery of powerful and refreshing airflow.



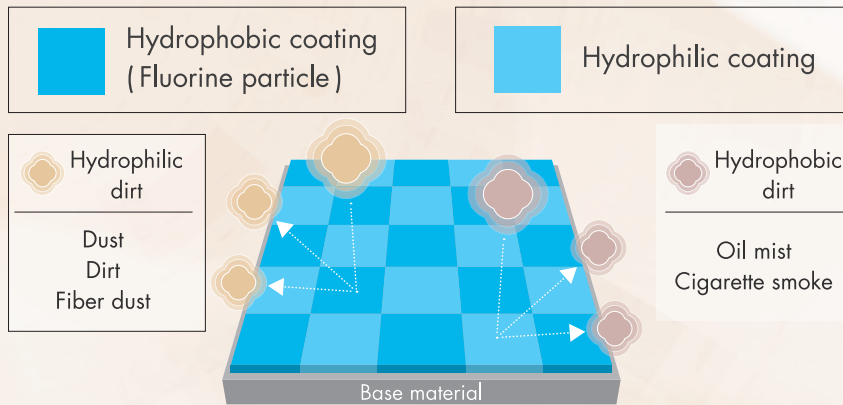
MITSUBISHI ELECTRIC launched the World's First* Room Air Conditioner equipped with Cross Flow Fan in 1968.

*Based on Euromonitor International research

Dual Barrier Coating

State-of-the-art Dual Barrier Coating technology prevents rust and greasy dirt from getting into the air conditioner.

Dual Barrier repels both types of dirt



Dirt is generally classified into two groups.

Dual Barrier Coating works as a barrier coating for both, with blended “fluorine particles” that prevent hydrophilic dirt penetration and “hydrophilic particles” that prevent hydrophobic dirt.



FAN

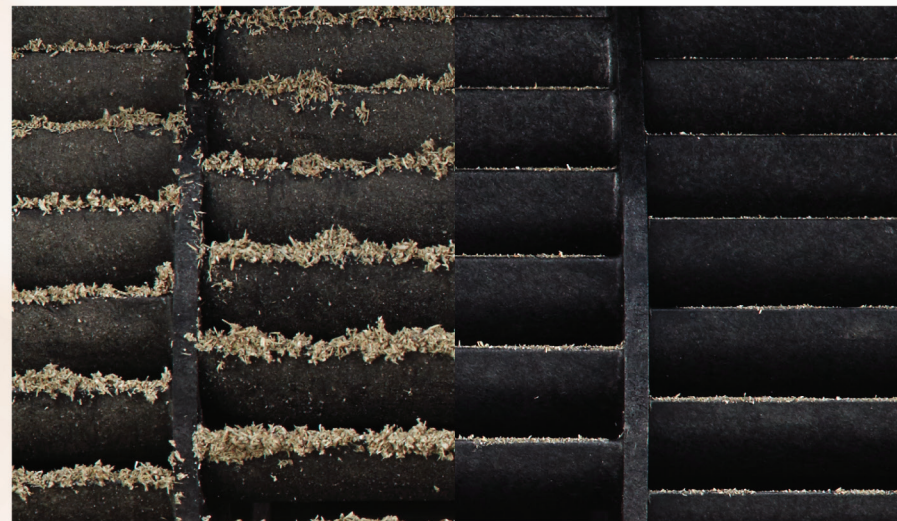
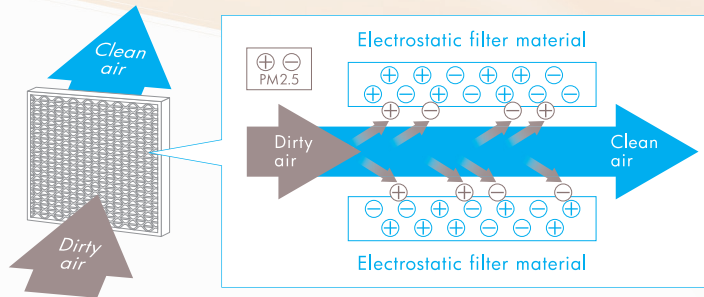


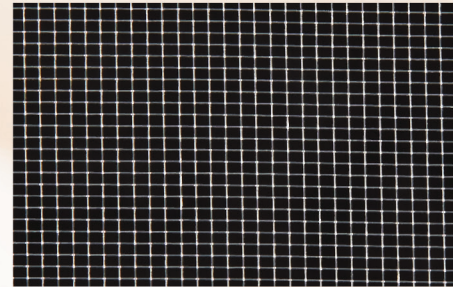
Image after 10 years

Dual Barrier Coating used

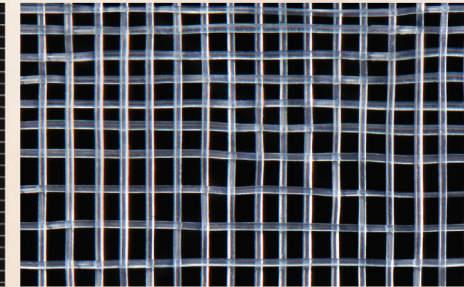
Micro Particle Catching Filter and High Density Filter*



Effectively catches floating PM 2.5 particles to maintain clean air in the room.



High Density Filter
High Density Filter can prevent smaller dust from entering the inside of air conditioner.



Standard Filter

Autovane Control Up And Down/Left And Right

Horizontal Airflow/Auto Vane Control



Up & Down Auto vanes can be set at 5 positions and swing.



Auto vane can be moved to left & right, up & down

SWING

Left & Right

Auto vanes can be set at 6 position and swing.



Auto Vane Control Button



* Optional

MSY-JR Series

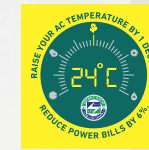
FUNCTIONS & FEATURES



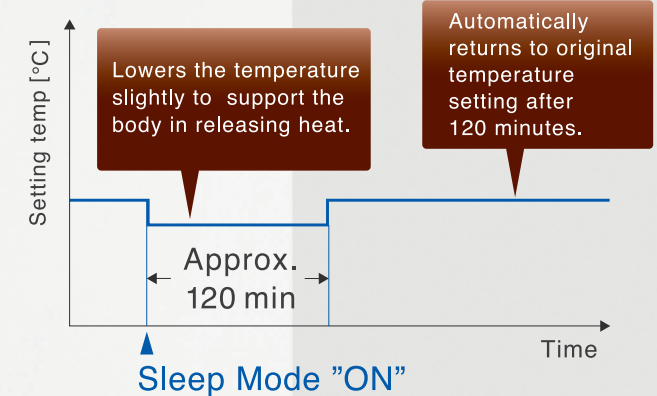
Remote Controller

- | | | |
|--|---|---|
| Joint Lap DC Motor | Computerised Dehumidification | Fuzzy Logic "I Feel" |
| PAM (Basic) | Electronic Metal Housing | Battery Replacement Indicator |
| Grooved Piping | 24 Hour Timer | 12m Long Airflow |
| Auto Vertical Vane (JR-30/36) | Self-diagnosis (IDU Blinking) | Auto Restart |
| Auto Horizontal Vane | Electrostatic Anti-allergy Enzyme Filter (Optional) | Blue Fin Condenser Toughness (JR-30/36) |
| Anti-rust | Dual Barrier Coating (FAN) | IDU Anti-corrosion Coating |
| Powerful Cool (JR-22/30) | Double Horizontal Vane (JR-30/36) | Sleep Mode (JR-36) |
| Anti-Mold Filter | Auto Fan Speed Mode | Error Code Display on RC (JR-36) |
| High Density Filter (Optional in JR-30/36) | DC Fan Motor | Fast Cooling (JR-36) |
| Micro Particle Catching Filter (Optional) | Econo Cool (JR-30) | |

24°C DEFAULT SETTING



SLEEP MODE






LUMINOUS BUTTONS



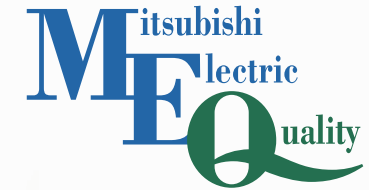
ERROR CODE DISPLAY

MSY-JR Series Specifications

| Type | Cooling Only | | | | |
|-------------------|-----------------------------------|---|---|---|---|
| Model Name | Indoor Unit | | MSY-JR22VF | MSY-JR30VF | MSY-JR36VF |
| | Outdoor Unit | | MUY-JR22VF | MUY-JR30VF | MUY-JR36VF |
| Refrigerant | R32 | | | | |
| Power Supply | Source | Single phase, 230V, 50Hz Outdoor power supply | | | |
| Capacity | Rated (Min-Max) | kW | 6.6 (1.6-6.7) | 8.2 (2.4-9.2) | 10.0 (2.9-10.2) |
| | TR | TR | 1.9 | 2.5 | 3.0 |
| Total Input | Rated (Min-Max) | kW | 2.01 (0.34-2.20) | 2.53 (0.48-3.34) | 3.45(0.60-3.50) |
| ISEER | | | 4.22 | 4.36 | 4.00 |
| SPL | Indoor Unit (Quiet-Lo-Med-Hi-SHi) | dB(A) | 29-37-41-45-51 | 30-38-45-51 | 32-38-43-49-53 |
| Air Volume | Indoor Unit (Quiet-Lo-Med-Hi-SHi) | CFM | 254-335-417-537-671 | 307-413-519-735 | 360-508-621-784-935 |
| Operating Current | Rated | A | 9.2 | 11.6 | 15.3 |
| | Max | A | 12.5 | 16.5 | 16.7 |
| Indoor Unit | Dimensions (H x W x D) | mm | 305x923x250 | 325x1100x238 | 365x1175x295 |
| | Weight | kg | 12.5 | 15.0 | 20 |
| Outdoor Unit | Dimensions (H x W x D) | mm | 714x800x285 | 880x840x330 | 880x840x330 |
| | Weight | kg | 37.0 | 48.5 | 49 |
| | Breaker Size (MCB required) | A | 16 | 20 | 20 |
| Ext. Piping | Diameter Liquid | mm (inches) | 6.35(1/4) | 6.35(1/4) | 6.35(1/4) |
| | Diameter Gas | mm (inches) | 12.7(1/2) | 12.7(1/2) | 15.88(5/8) |
| | Max.Length Out-In | m | 30 | 30 | 30 |
| | Max.Height Out-In | m | 15 | 15 | 15 |
| Star Rating | | |  |  |  |

| | | | | | |
|---------------------------|--|------------------|----------|----------|----------|
| Pre Filter | ANTI-MOLD/HIGH DENSITY FILTER (Option only for JR36) | | | | |
| Air Cleaning Filter | ELECTROSTATIC ANTI-ALLERGY ENZYME FILTER (Option), MICROPARTICLE CATCHING FILTER(Option) | | | | |
| Timer | | | 12h | 24h | 24h |
| Vertical Swing | Auto | | - | ○ | ○ |
| | Manual | | ○ | - | - |
| Wide and Long | | | - | ○ | - |
| "Control Wiring (Copper)" | ODU to IDU | Core No. x Sq.mm | 4C x 1.0 | 4C x 1.0 | 4C x 1.0 |
| "Power Cable (Copper)" | To ODU | Core No. x Sq.mm | 3C x 2.0 | 3C x 2.5 | 3C x 2.5 |
| "ODU Breaker Size" | To ODU | A | 16 | 20 | 20 |

Mitsubishi Electric Quality



What is MITSUBISHI ELECTRIC Quality? MEQ represents our dedication to excellence in developing and manufacturing exceptional, eco-friendly home appliances, amazing industrial products, reliable public infrastructure systems and inspiring space technologies, which are truly out of this world. And there's so much more. When you see the MEQ logo, you know something good is being created.

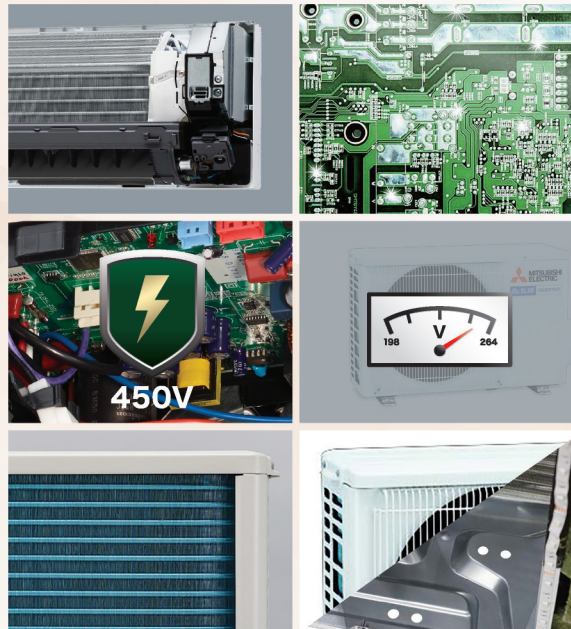
Development

Taking into account the various harsh environments around the world, at MITSUBISHI ELECTRIC we have established uniquely strict quality control standards, various control standards and various quality evaluation tests for our products.



Design

In order to ease our customers' minds we invest great care when designing, so they can use our products with the peace of mind delivered by high-quality parts and impeccable assembly.



Production

MITSUBISHI ELECTRIC makes full use of our advanced production technology to efficiently produce top quality products. All of our products are inspected by experienced professionals.





- Head Office
- Branch Offices
- ▲ Satellite Offices
- * Technical Centres
- # Sales Offices

*Map for reference purpose only.

MITSUBISHI ELECTRIC INDIA PVT. LTD.

HEAD OFFICE: 3rd Floor, Tower A, Global Gateway, MG Road,

Gurugram – 122002 (Haryana)

Tel. No. (Main): 0124-6739300/301. **Customer Care Toll Free No:** 1800 102 2626

Website: www.MitsubishiElectric.in

E-mail: customersupport@asia.meap.com

TECHNICAL CENTERS:

Ahmedabad: 079-67777874; **Bengaluru:** 080-40201600; **Chennai:** 044-49232222;

Delhi: 011-66057900; **Mumbai:** 022-66116200

BRANCH/SALES OFFICE:

Ahmedabad: 079-67777888; **Bhubaneswar:** 09073949597; **Bengaluru:** 080-40201600; **Coimbatore:** 0422-4385606;

Chandigarh: 0172-4601645; **Chennai:** 044-49232222; **Delhi:** 011-66057900;

Ghaziabad: 011-66057900; **Hyderabad:** 040-43438888; **Indore:** 0731-4098991;

Jaipur: 0141-4011109; **Kolkata:** 033-40858800/16-88; **Kochi:** 0484-4862093;

Lucknow: 0522-4002607; **Ludhiana:** 0161-4061654; **Mumbai:** 022-66116200;

Nagpur: 09921442323; **Pune:** 09922441773; **Rajkot:** 09586605009;

Surat: 0261-4003111; **Vadodara:** 0265-2314699; **Vijaywada:** 08498894567.

SATELLITE OFFICES:

Agra: 09536900140; **Amritsar:** 09780021037;

Aurangabad: 09552572820; **Bhopal:** 08448398010; **Dehradun:** 08800878763;

Goa: 09167113443; **Hubli:** 08448398010; **Kanpur:** 07755007767; **Patna:**

09073949596; **Raipur:** 08448397997; **Ranchi:** 0973949598; **Tirupati:**

09319591931; **Trichy:** 09205599022; **Varanasi:** 09336311110;

Vizag: 09205987308



E-waste Collection & Disposal Process:

Customer can get complete details of company process on collection, disposal of e-waste products (i.e. 'Mitsubishi Electric' make Air Conditioner) and incentive/exchange scheme for returning e-waste on the **Company website www.MitsubishiElectric.in** or call on our **toll free number 1800 102 2626**